

THE TIME LIVED THE TIME LIVED THE TIME LIVED

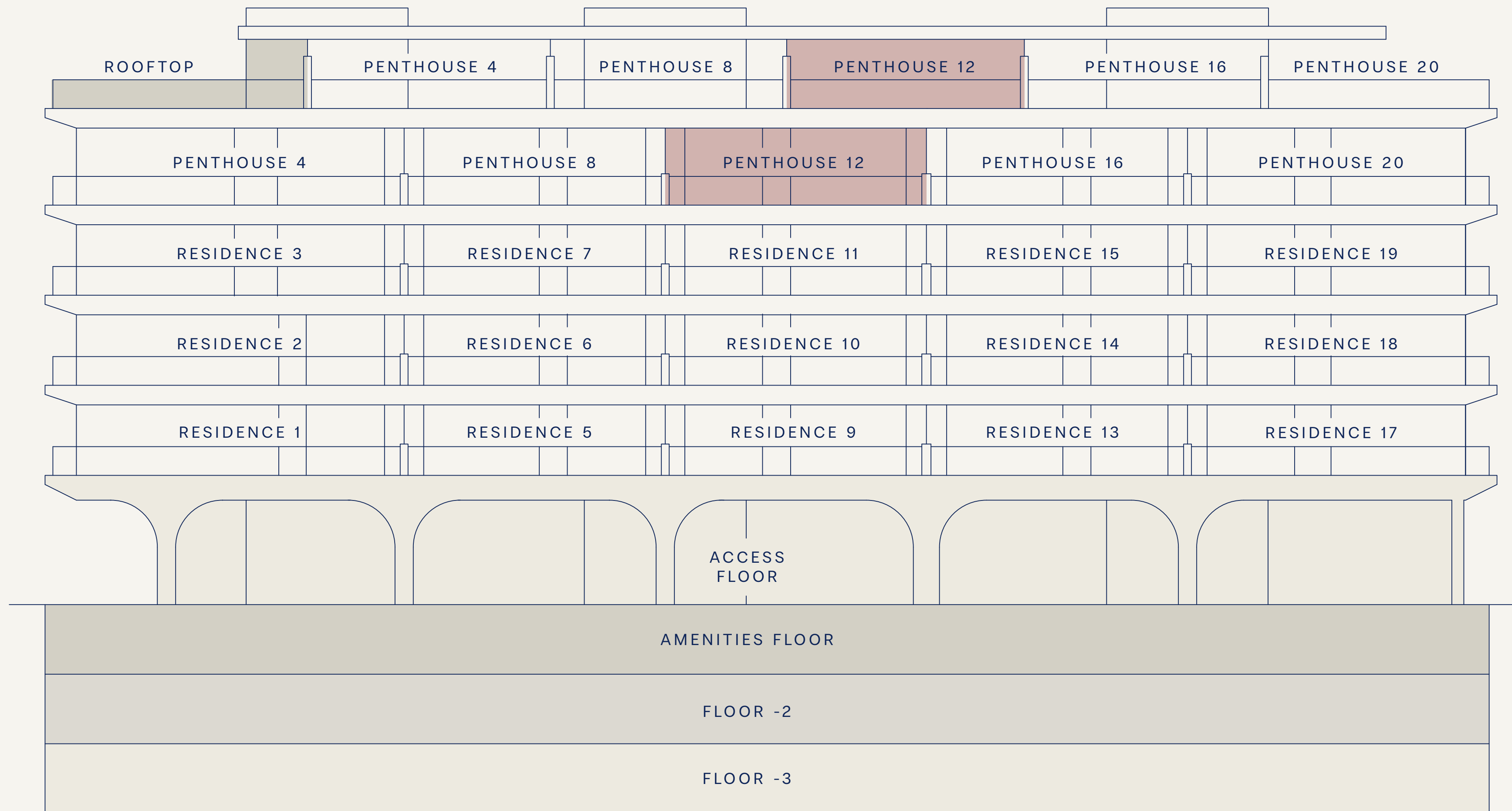
# NACARÉ

ESTEPONA ✕ MÁLAGA

PENTHOUSE · 12

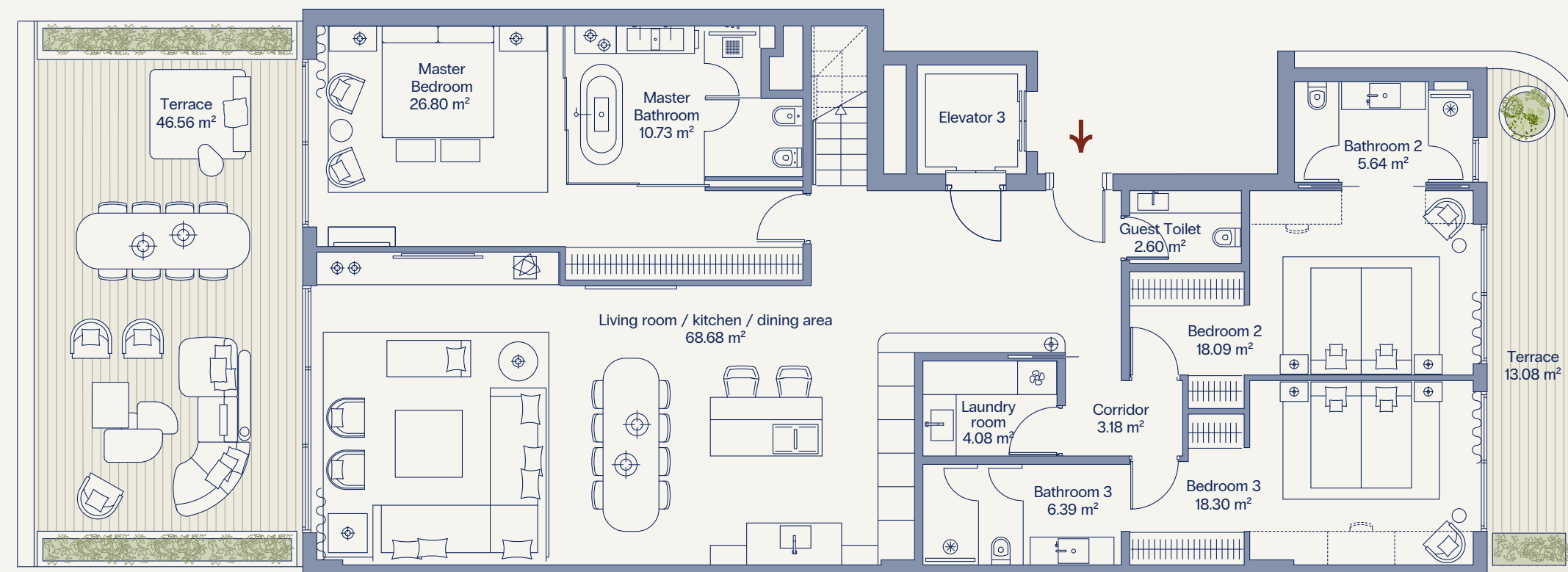


# NACARÉ RESIDENCES





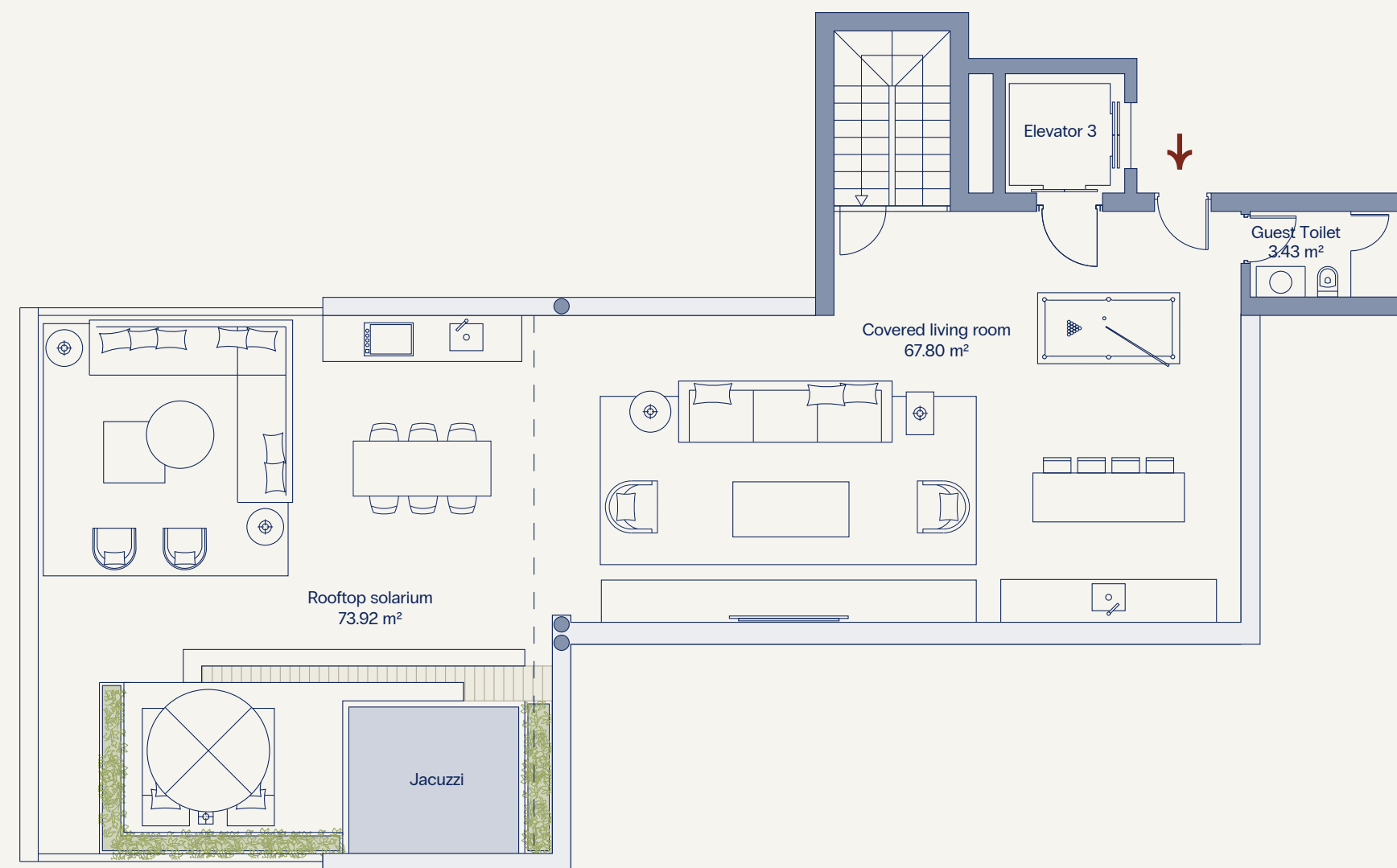
## MAIN FLOOR



SEA VIEW

MOUNTAIN VIEW

## ROOFTOP FLOOR



### USABLE AREA

167,92 sq m  
Indoor area

201,36 sq m  
Outdoor terrace

Usable area: 184,71 sq m (according to Decree 218/2005)

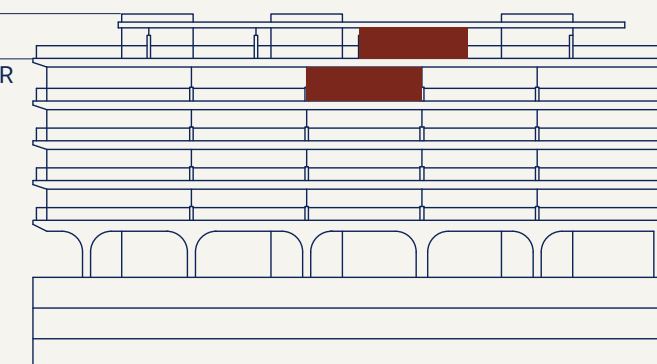
### BUILT AREA

191,16 sq m  
Indoor area

225,23 sq m  
Covered terrace

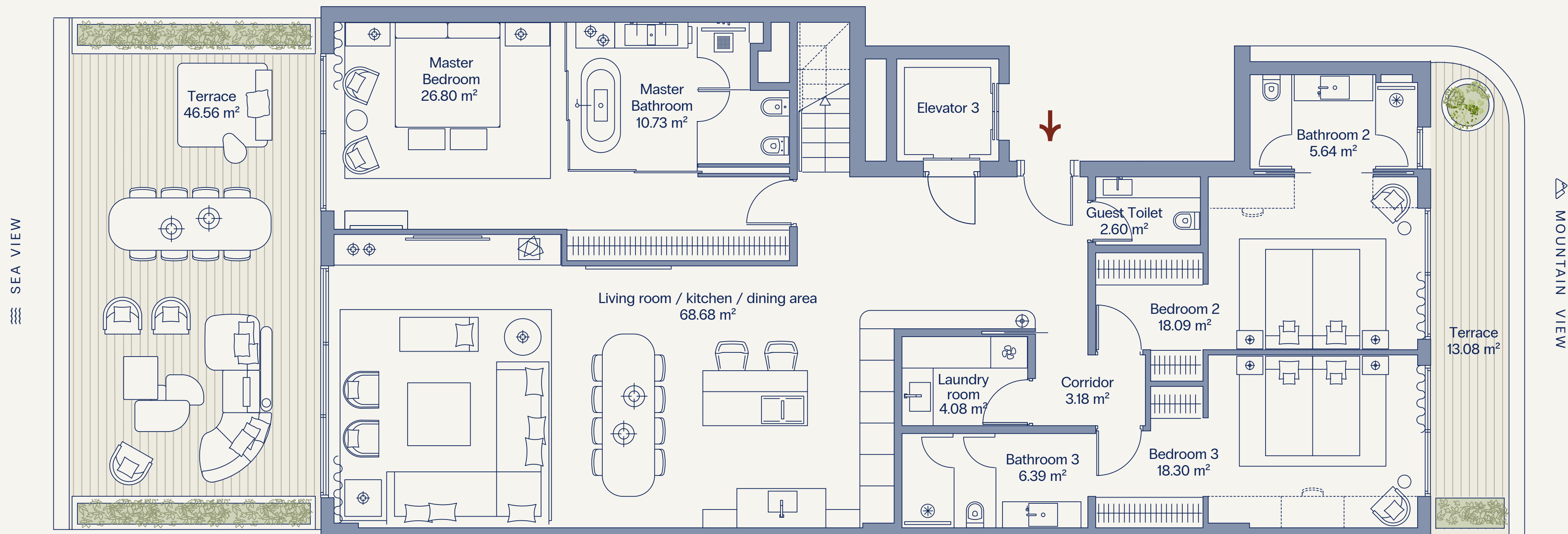
### ROOFTOP FLOOR

4<sup>TH</sup> FLOOR · MAIN FLOOR





# PENTHOUSE · 12 · MAIN FLOOR



## USABLE AREA

167,92 sq m  
Indoor area

59,64 sq m  
Covered terrace

## BUILT AREA

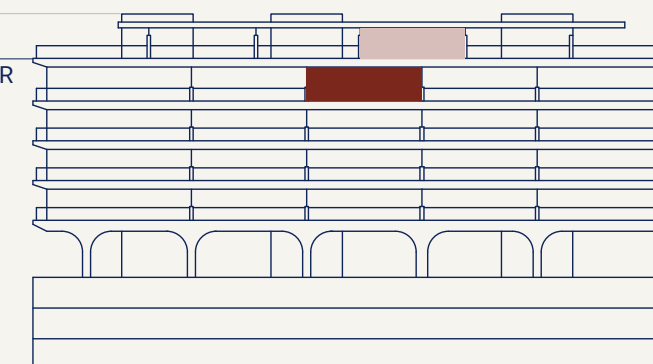
191,16 sq m  
Indoor area

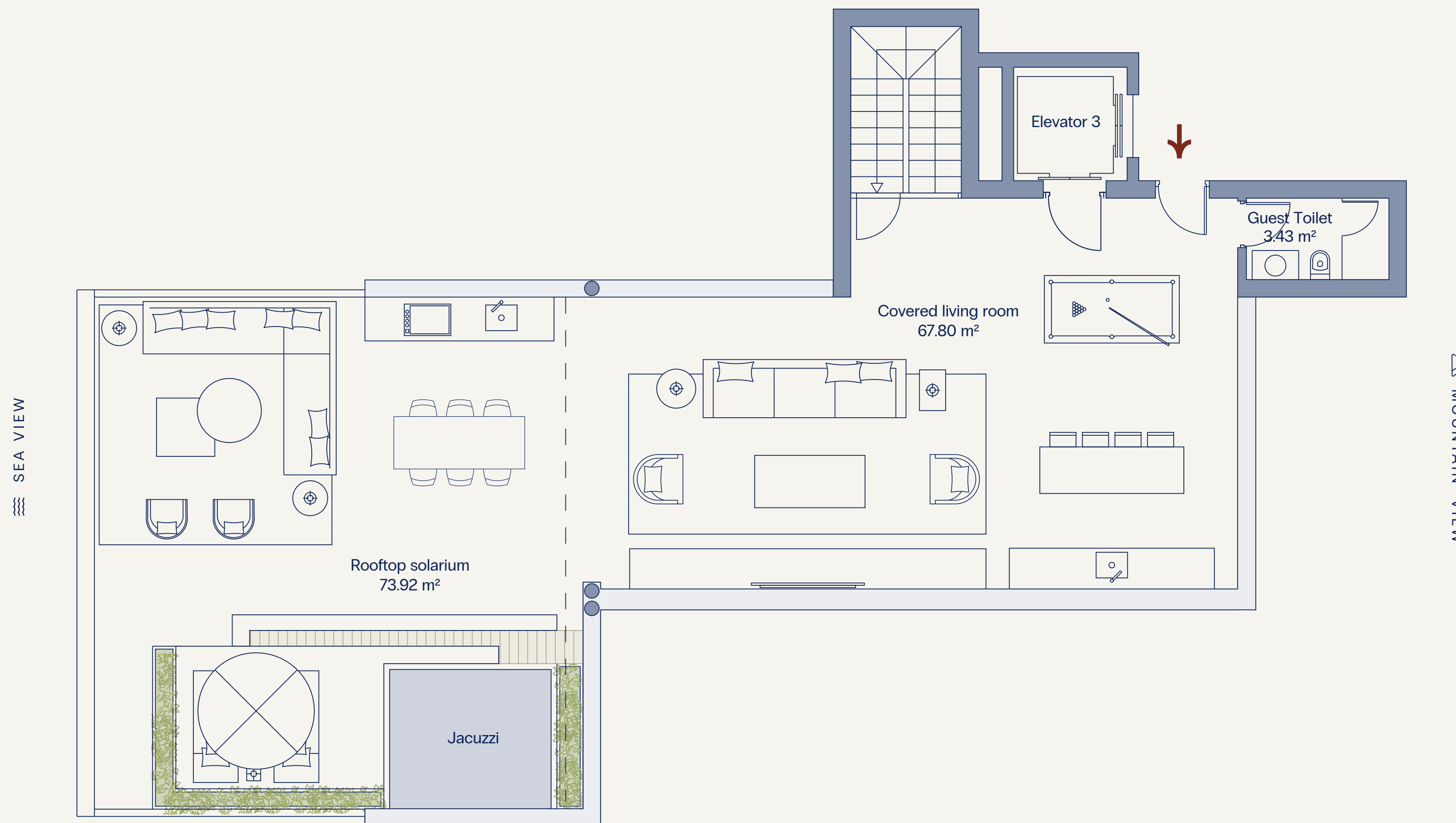
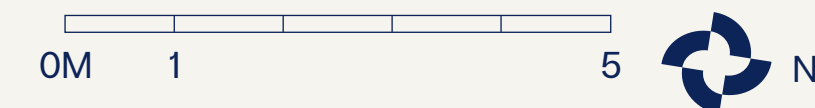
67,46 sq m  
Covered terrace

Usable area: 184,71 sq m (according to Decree 218/2005)

## ROOFTOP FLOOR

4<sup>TH</sup> FLOOR · MAIN FLOOR





USABLE AREA

67,80 sq m  
Covered solarium

73,92 sq m  
Uncovered solarium

BUILT AREA

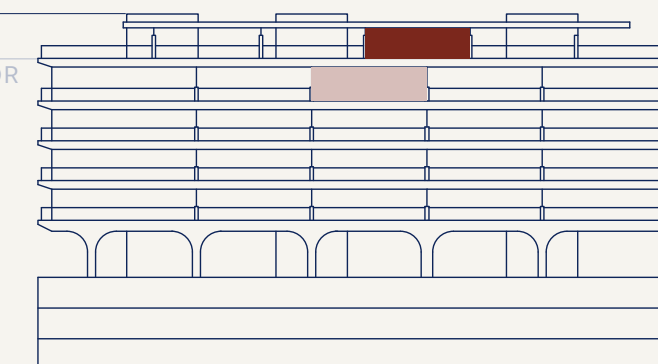
78,60 sq m  
Covered solarium

79,17 sq m  
Uncovered solarium

Usable area: 184,71 sq m (according to Decree 218/2005)

ROOFTOP FLOOR

4<sup>TH</sup> FLOOR · MAIN FLOOR

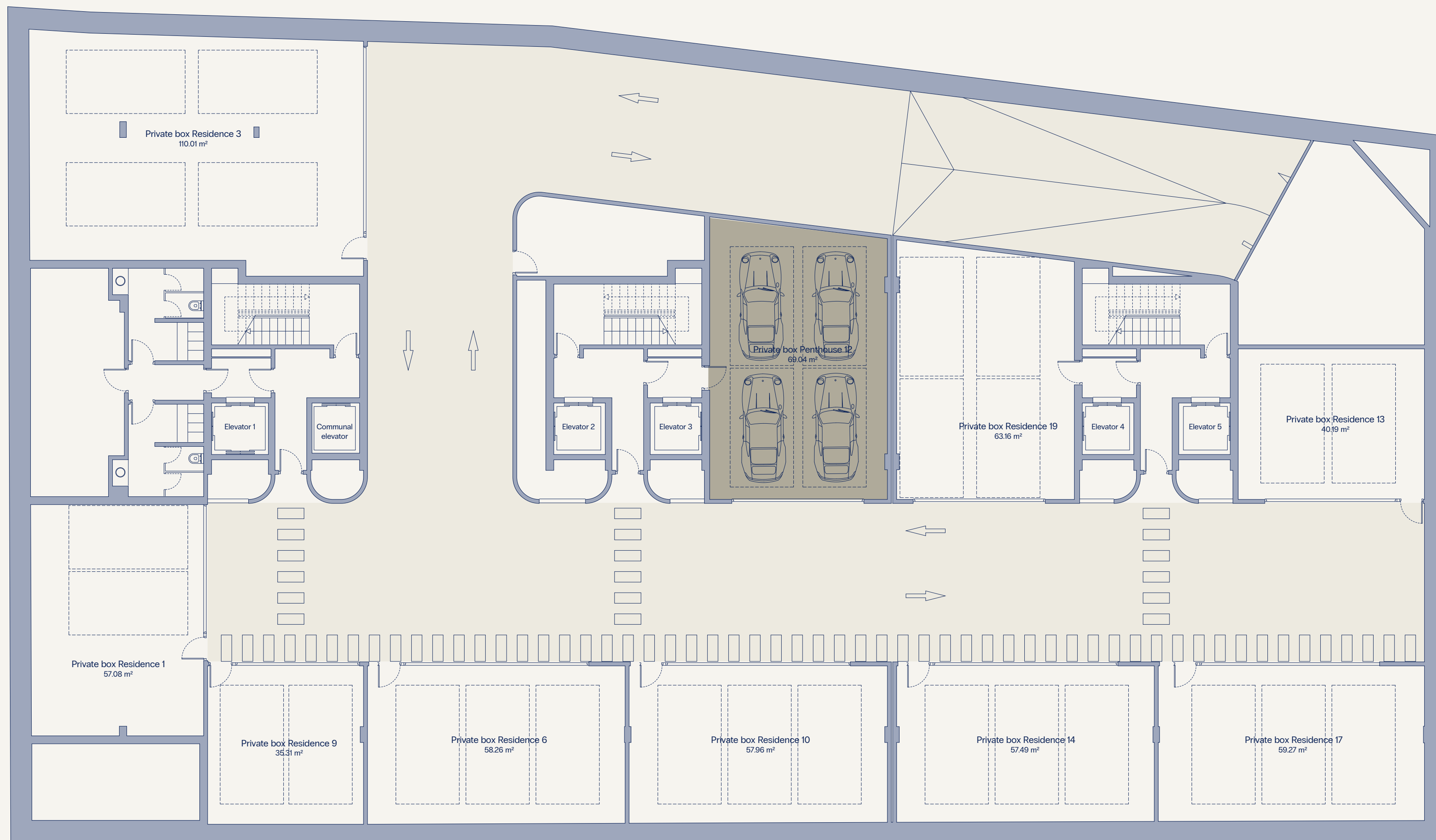
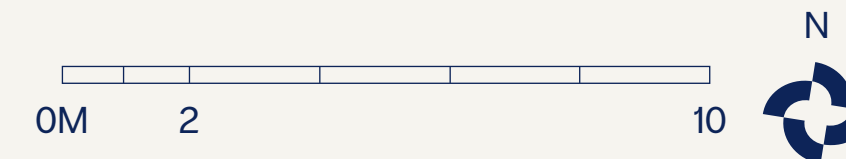




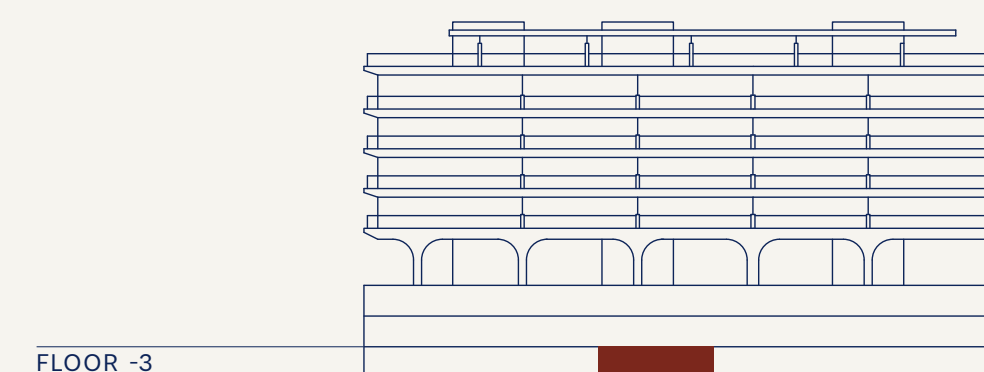
# GARAGE · FLOOR - 3



MOUNTAIN VIEW



SEA VIEW



FLOOR -3

THE TIME LIVED THE TIME LIVED THE TIME LIVED

FOR FURTHER INFORMATION

+34 951 100 077

OR VISIT OUR WEBSITE

[nacare.es](http://nacare.es)

A PROJECT BY

**BH**  
BLACK HORSE  
PARTNERS

MASTER BROKER



ARCHITECTURE

**MAIZ & DIAZ**  
ARQUITECTOS

INTERIOR DESIGN

**PEDRO PEÑA**  
INTERIOR DESIGN

LANDSCAPING

Marina  Ortiz Quintas  
PAISAJISTA

BRAND & RESIDENTIAL  
EXPERIENCE



VERSIÓN  
14 · 04 · 26

The information contained in this document is provided for informational and illustrative purposes only, has no contractual value, and does not constitute a binding offer. Images, renders, infographics, plans, surface areas, layouts, and all other representations, including computer-generated visuals, are for illustrative purposes only and may be subject to change during the course of the project for technical, construction, legal, or design reasons. Furniture, textile elements, decorative wall finishes, fireplaces, and suspended lighting fixtures shown in the project's visual materials are included solely for illustrative purposes to suggest potential decoration or layout options and are not included in the purchase price. Landscaping, planting, and botanical elements depicted are likewise indicative only and may vary depending on seasonal availability, sustainability criteria, or technical requirements. The developer reserves the right to introduce any modifications deemed necessary or appropriate for technical, construction, legal, or design reasons, as well as those arising from the granting of administrative licenses, requirements imposed by the relevant authorities, instructions from the project management team, or compliance with applicable regulations at any given time, all within the quality standards established for the development.