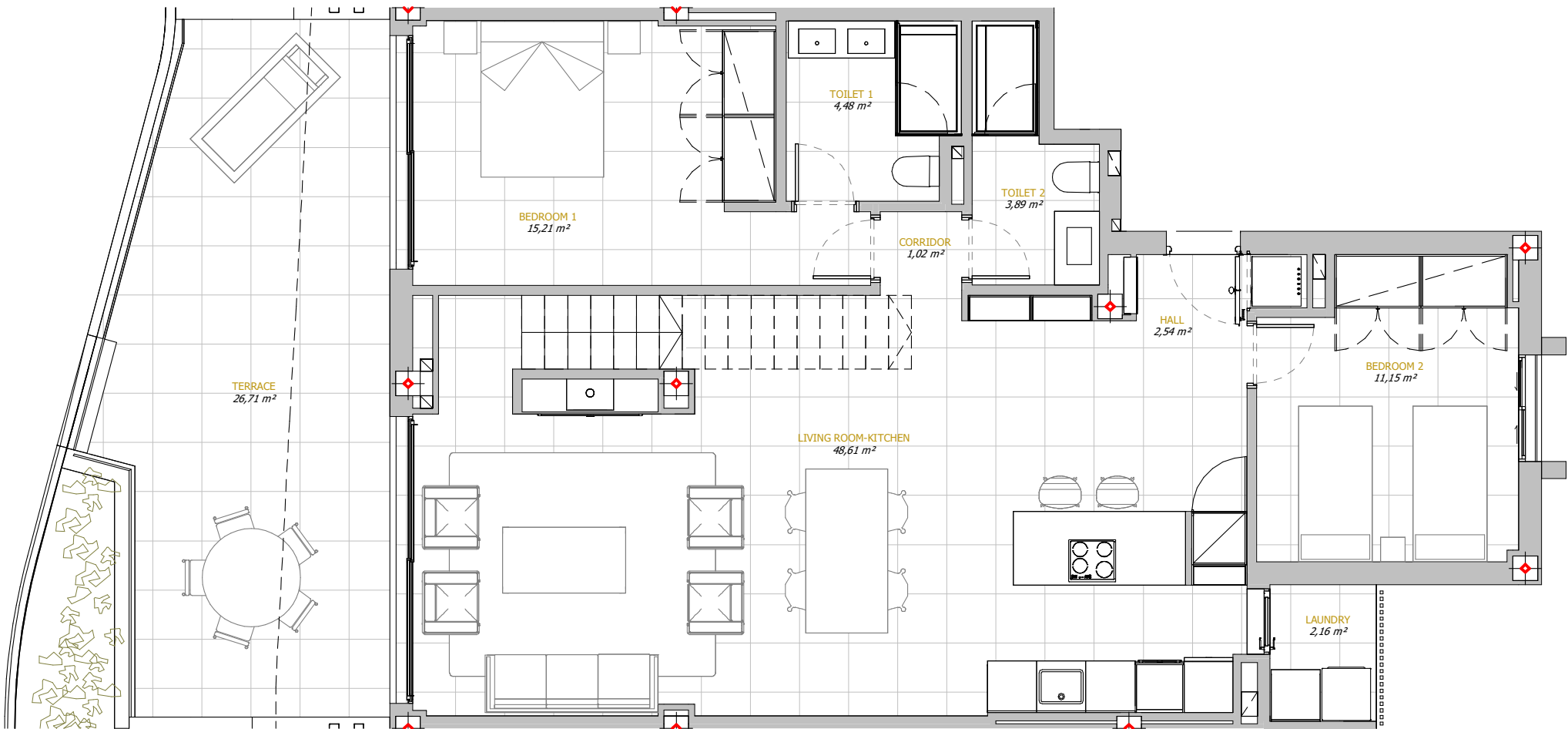




PENTHOUSE
E1-1B



1 : 60

USABLE AREA

Usable area of the property:	99,10 m ²
Usable area of terraces:	94,62 m ²
Swimming pool:	5,61 m ²
TOTAL USABLE AREA:	199,32 m ²

BUILT AREA

Enclosed built area:	119,83 m ²
Built area of terraces:	33,28 m ²
Built area of solarium:	96,53 m ²
TOTAL USABLE AREA:	249,64 m ²

USABLE AREA (D.218/2005):	109,01 m ²
BUILT AREA (D.218/2005):	151,20 m ²

LOCATION
Plot UA 4.3 – URP-VB2
Elviria Marbella (Málaga)

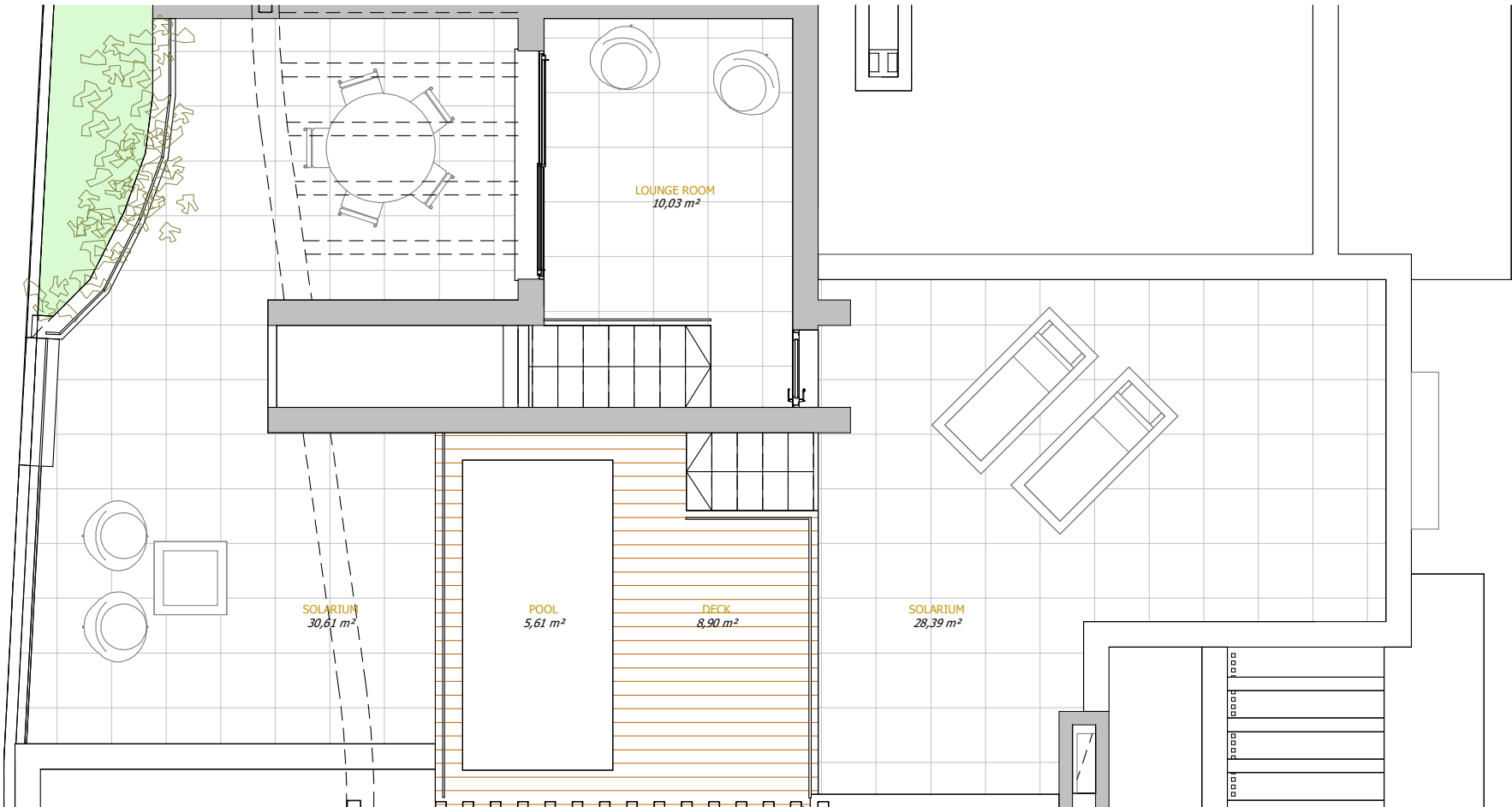
DEVELOPED BY
ConceptHomes
INTERNATIONAL

ARCHITECTURE
ISMAEL MÉRIDA ARQUITECTOS

MARKETED BY
NVOGA
MARBELLA REALTY



PENTHOUSE
E1-1B'



1 : 60

USABLE AREA

Usable area of the property:	99,10 m ²
Usable area of terraces:	94,62 m ²
Swimming pool:	5,61 m ²
TOTAL USABLE AREA:	199,32 m ²

BUILT AREA

Enclosed built area:	119,83 m ²
Built area of terraces:	33,28 m ²
Built area of solarium:	96,53 m ²
TOTAL USABLE AREA:	249,64 m ²

USABLE AREA (D.218/2005):	109,01 m ²
BUILT AREA (D.218/2005):	151,20 m ²

LOCATION
Plot UA 4.3 – URP-VB2
Elviria Marbella (Málaga)

DEVELOPED BY
ConceptHomes
INTERNATIONAL

MARKETED BY
NVOGA
MARBELLA REALTY

ARCHITECTURE
ISMAEL MÉRIDA ARQUITECTOS