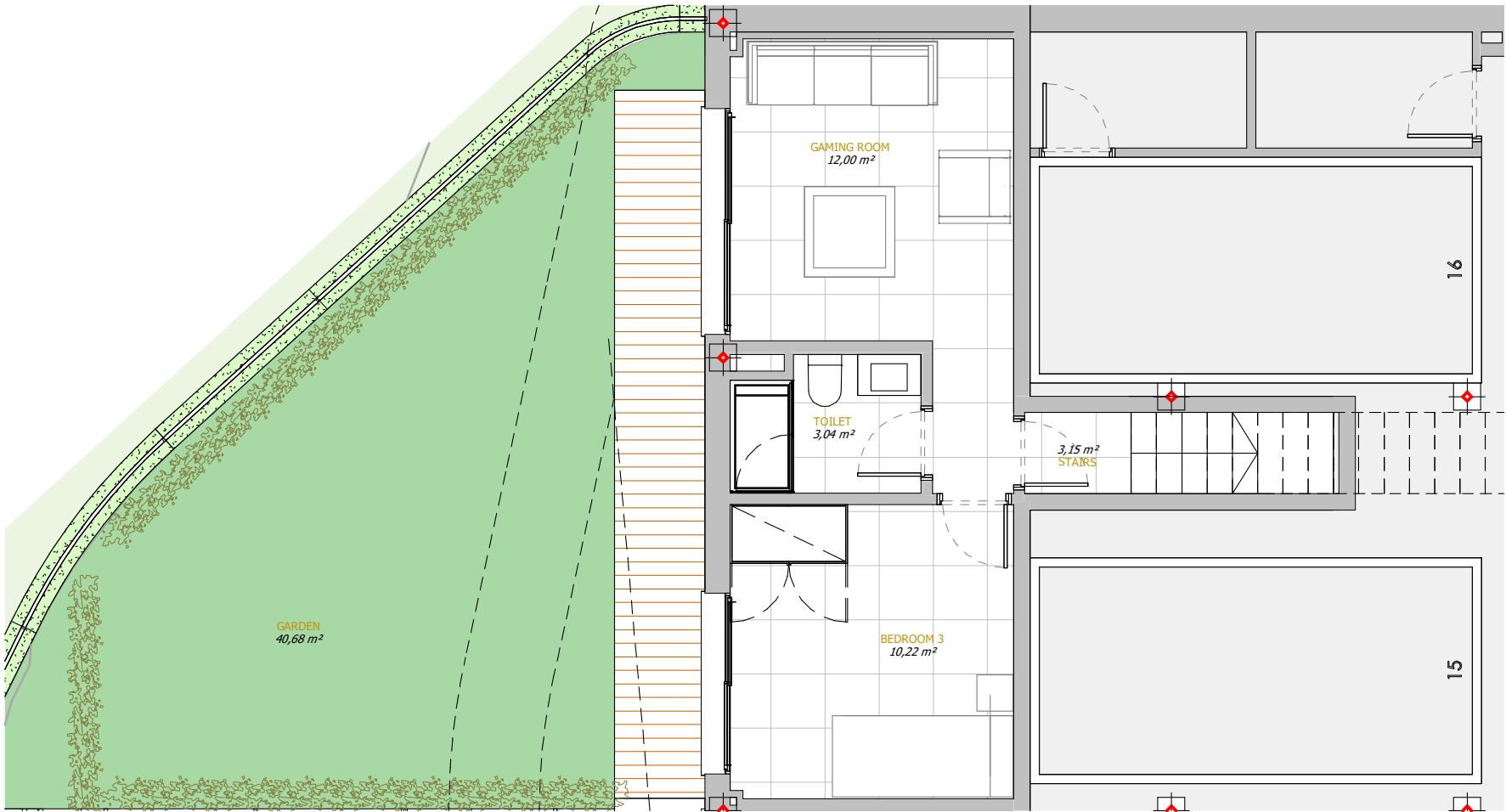




GARDEN VILLA BASEMENT  
E1-0A



1 : 60

USABLE AREA

Usable area of the property:	117,05 m <sup>2</sup>
Usable area of terraces:	54,88 m <sup>2</sup>
TOTAL USABLE AREA:	171,92 m <sup>2</sup>

BUILT AREA

Enclosed built area:	140,48 m <sup>2</sup>
Built area of terraces:	59,74 m <sup>2</sup>
TOTAL USABLE AREA:	200,22 m <sup>2</sup>

Private garden	40,68 m <sup>2</sup>
USABLE AREA (D.218/2005):	128,77m <sup>2</sup>
BUILT AREA (D.218/2005):	177,34 m <sup>2</sup>

LOCATION

Plot UA 4.3 – URP-VB2  
Elviria Marbella (Málaga)

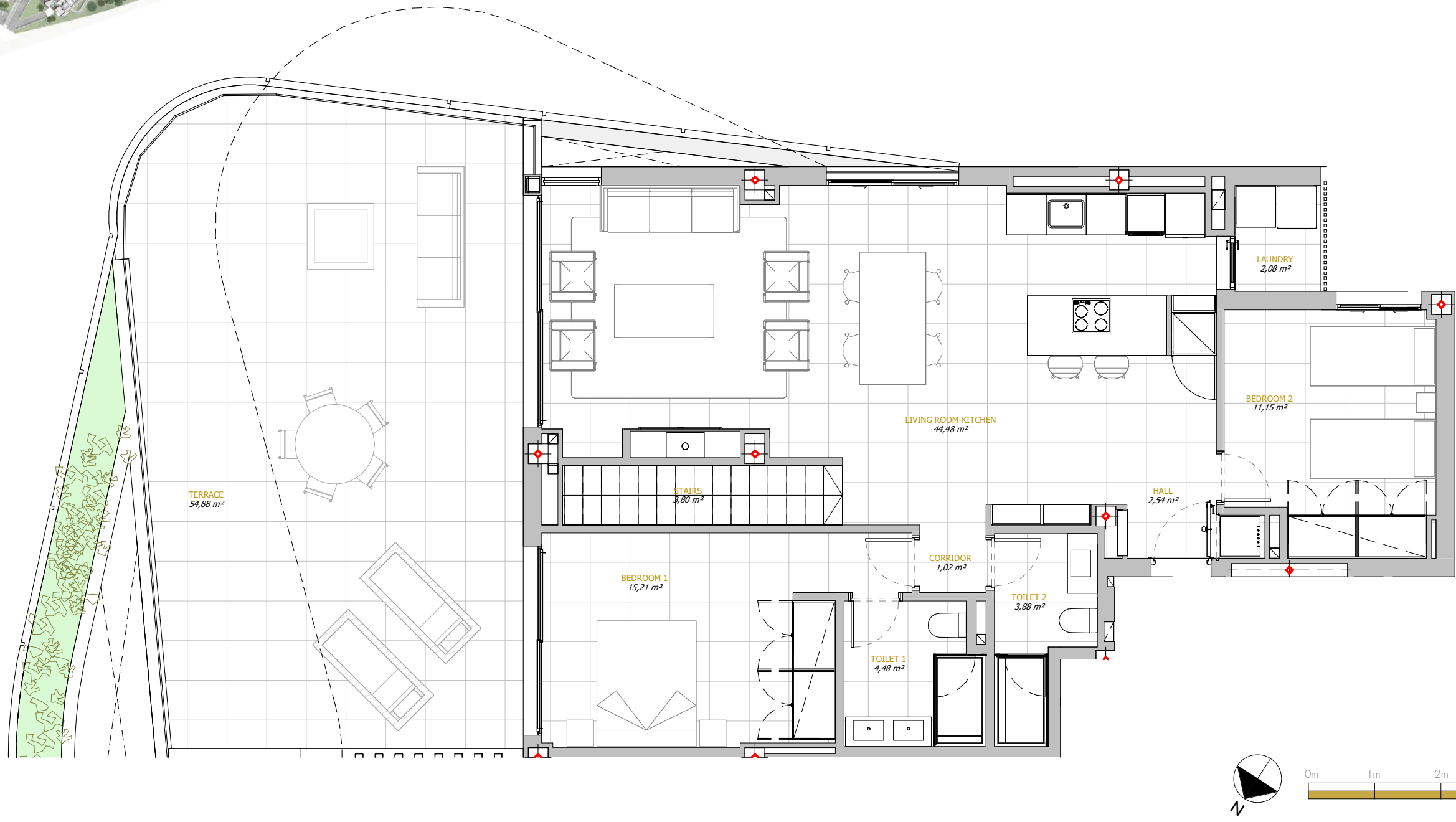
DEVELOPED BY  
ConceptHomes  
INTERNATIONAL

MARKETED BY  
NVOGA  
MARBELLA REALTY

ARCHITECTURE  
ISMAEL MÉRIDA ARQUITECTOS



GARDEN VILLA GROUND FLOOR  
E1-0A'



USABLE AREA

Usable area of the property:	117,05 m <sup>2</sup>
Usable area of terraces:	54,88 m <sup>2</sup>
TOTAL USABLE AREA:	171,92 m <sup>2</sup>

BUILT AREA

Enclosed built area:	140,48 m <sup>2</sup>
Built area of terraces:	59,74 m <sup>2</sup>
TOTAL USABLE AREA:	200,22 m <sup>2</sup>

Private garden	40,68 m <sup>2</sup>
USABLE AREA (D.218/2005):	128,77m <sup>2</sup>
BUILT AREA (D.218/2005):	177,34 m <sup>2</sup>

LOCATION

Plot UA 4.3 – URP-VB2  
Elviria Marbella (Málaga)

DEVELOPED BY  
**ConceptHomes**  
INTERNATIONAL

ARCHITECTURE  
ISMAEL MÉRIDA ARQUITECTOS

MARKETED BY  
**NVOGA**  
MARBELLA REALTY