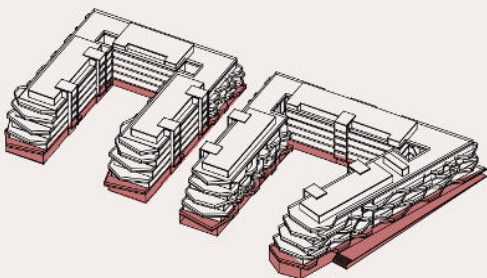


The information contained in this plans can be subject to changes until the end of the project. In case of disagreement between the comercial information and the information of the last project approved, it will attend always the last project approved.



TOTAL LIVING AREA (m²)	
BATH 1	3.03 m²
BEDROOM 1	8.18 m²
BEDROOM 2	9.38 m²
CORE	2.12 m²
DINING ROOM-KITCHEN	34.43 m²
ENTRY-HALL	9.64 m²
MASTER BATH	3.64 m²
MASTER BEDROOM	13.84 m²
GARDEN	27.97 m²
	27.97 m²

	PROJECT AREA	DECREE 218/2005
INTERIOR LIVING AREA	84.26	
TERRACE LIVING AREA	27.97	
TOTAL LIVING AREA	112.23	92.69
INT CONST AREA + PP. CA	116.69	-
TERRACE CONSTRUCTED AREA	30.03	-
TOTAL CONSTRUCTED AREA	146.72	125.12
(Include proper constructed area, CA proportional part and terrace)		

