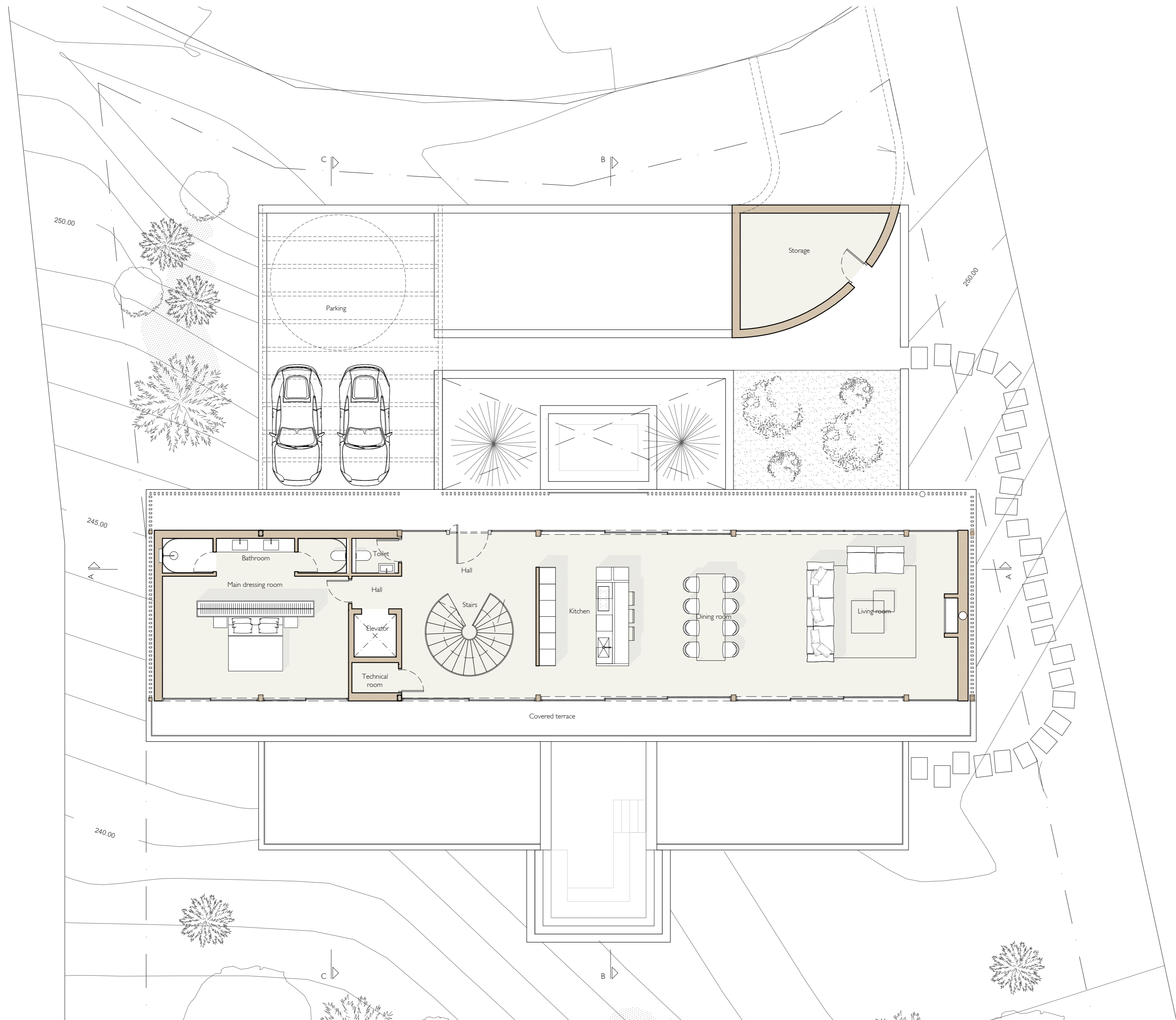




Floor plans, areas and room dimensions are indicative only and subject to change, construction variances and tolerances. In line with our policy of continuous improvement we reserve the right to alter the layout, building style landscaping and specifications at any time without notice.



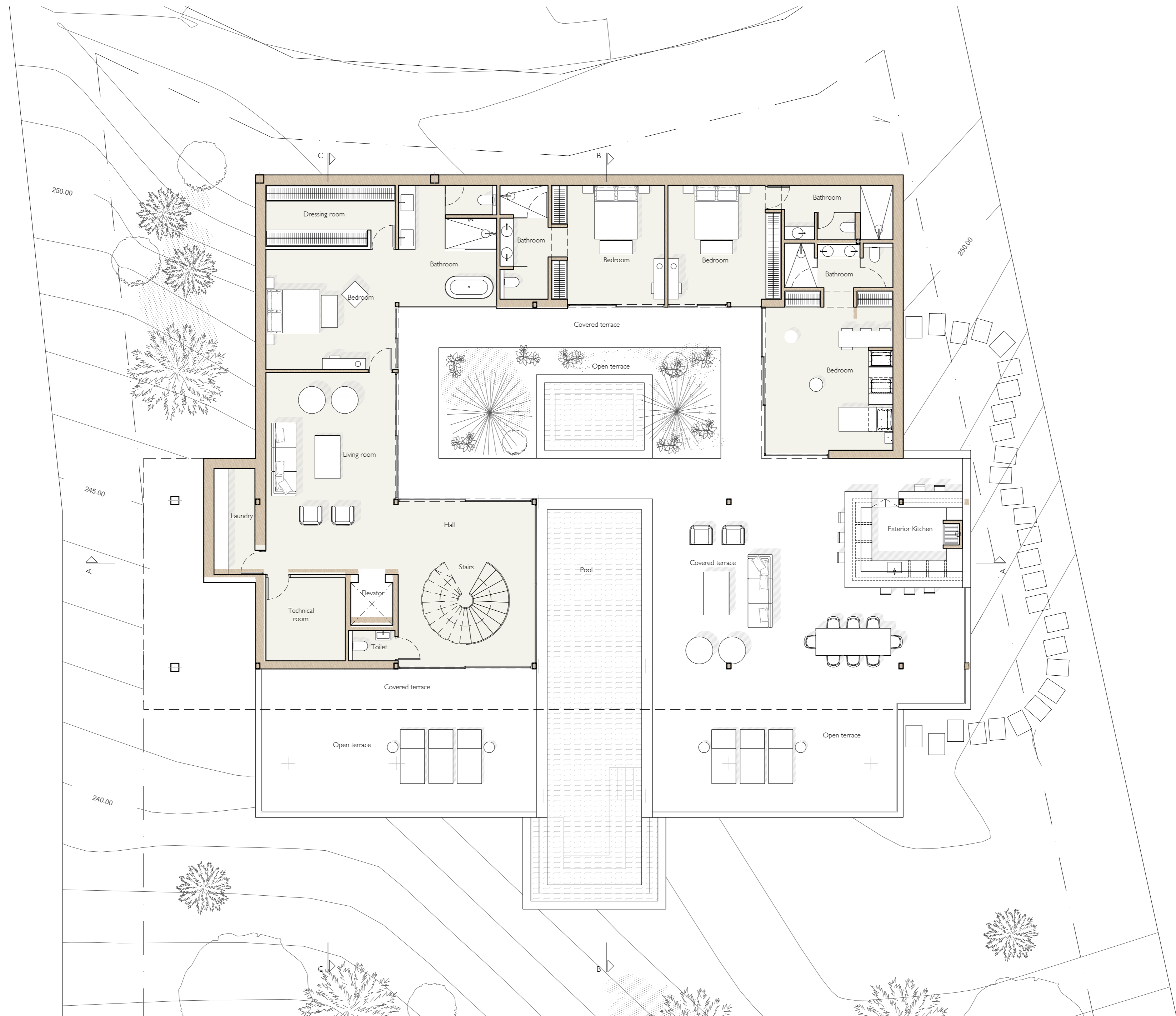
VILLA D2
MONTE MAYOR, BENAHAVÍS
PLOT PLAN



Floor plans, areas and room dimensions are indicative only and subject to change, construction variances and tolerances. In line with our policy of continuous improvement we reserve the right to alter the layout, building style landscaping and specifications at any time without notice.



VILLA D2
MONTE MAYOR, BENAHAVIS
MAIN FLOOR



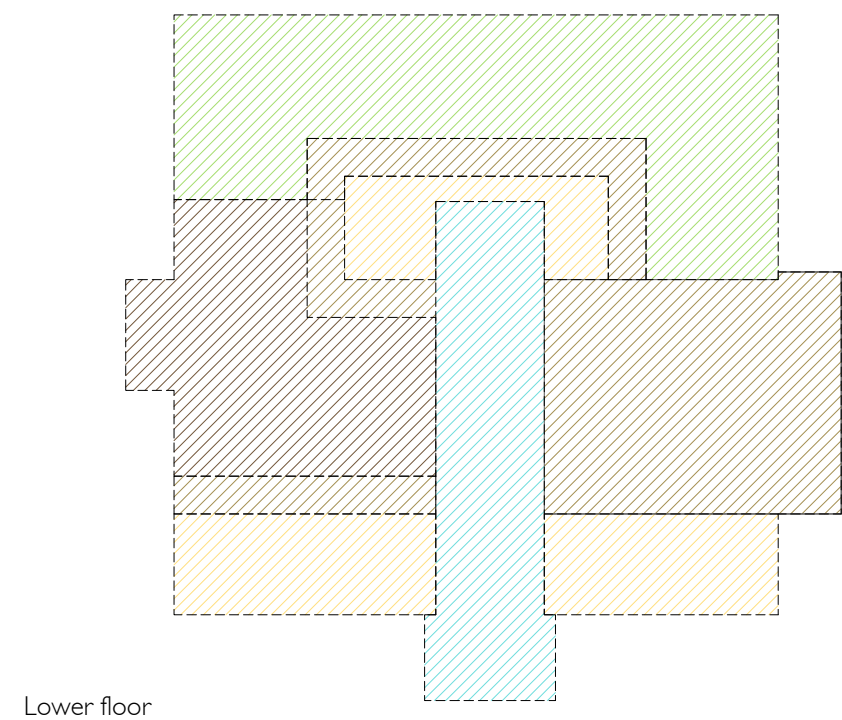
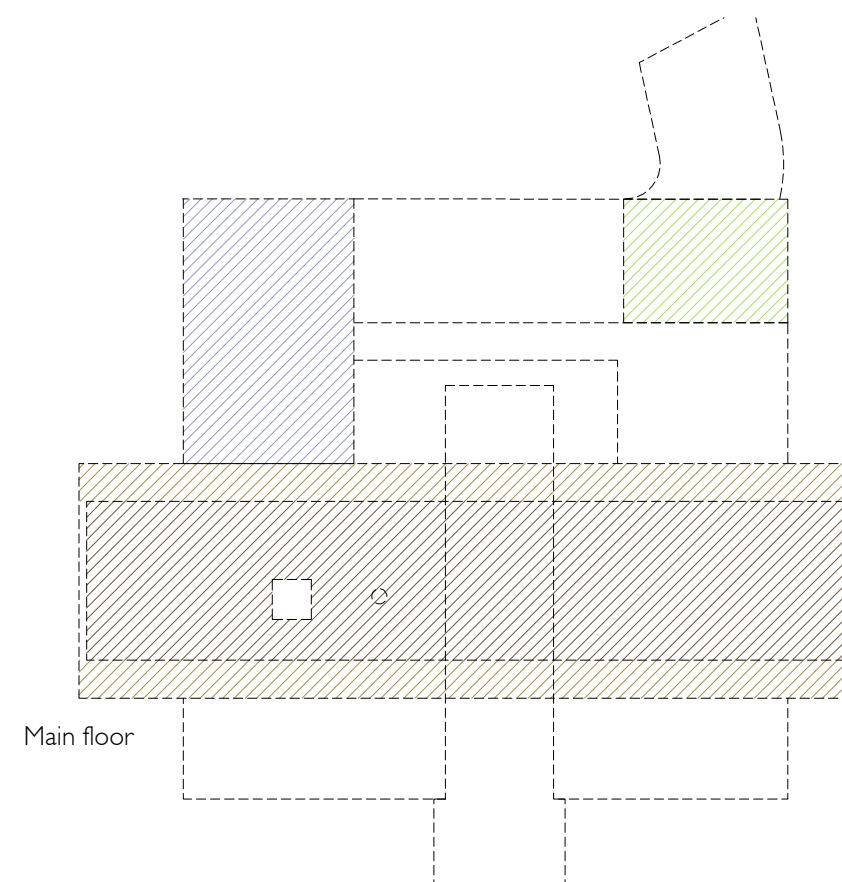
Floor plans, areas and room dimensions are indicative only and subject to change, construction variances and tolerances. In line with our policy of continuous improvement we reserve the right to alter the layout, building style landscaping and specifications at any time without notice.

0 5 10 mts.

VILLA D2
MONTE MAYOR, BENAHAVIS
LOWER FLOOR

1

VITAE
VILLAS



| | | |
|----------------------|-----------------------|--|
| FLOOR SURFACE: HOUSE | | |
| Main floor | 200,50 m ² | |
| Lower floor | 258,35 m ² | |
| TOTAL | 458,85 m ² | |

| | | |
|---------------------------------|-----------------------|--|
| FLOOR SURFACE: COVERED TERRACES | | |
| Main floor | 132,55 m ² | |
| Lower floor | 194,15 m ² | |
| TOTAL | 326,70 m ² | |

| | | |
|-----------------------------------|-----------------------|--|
| FLOOR SURFACE: UNCOVERED TERRACES | | |
| Main floor | 95,60 m ² | |
| Lower floor | 108,30 m ² | |
| TOTAL | 203,90 m ² | |

| | | |
|--------------|----------------------|--|
| POOL SURFACE | | |
| Lower floor | 88,20 m ² | |
| TOTAL | 88,20 m ² | |

| | | |
|---------------------|-------------------------|--|
| TOTAL FLOOR SURFACE | 1.077,65 m ² | |
| TOTAL PLOT SIZE | 3.277 m ² | |