



CASA PUEBLO 2
PLANTA BAJA

3 DORMITORIOS - 3,5 BAÑOS

SUP. PLANTA ALTA	119.34 m ²
SUP. PLANTA BAJA	125.34 m ²
SUP. PLANTA SÓTANO	120.79 m ²
TOTAL SUP. VIVIENDA:	365.47 m²
SUP. TERRAZA	67.00 - 124.00 m ²
SUP. PISCINA + JARDÍN	72.00 - 335.00 m ²
SUP. PARCELA	267.56 - 558.13 m ²

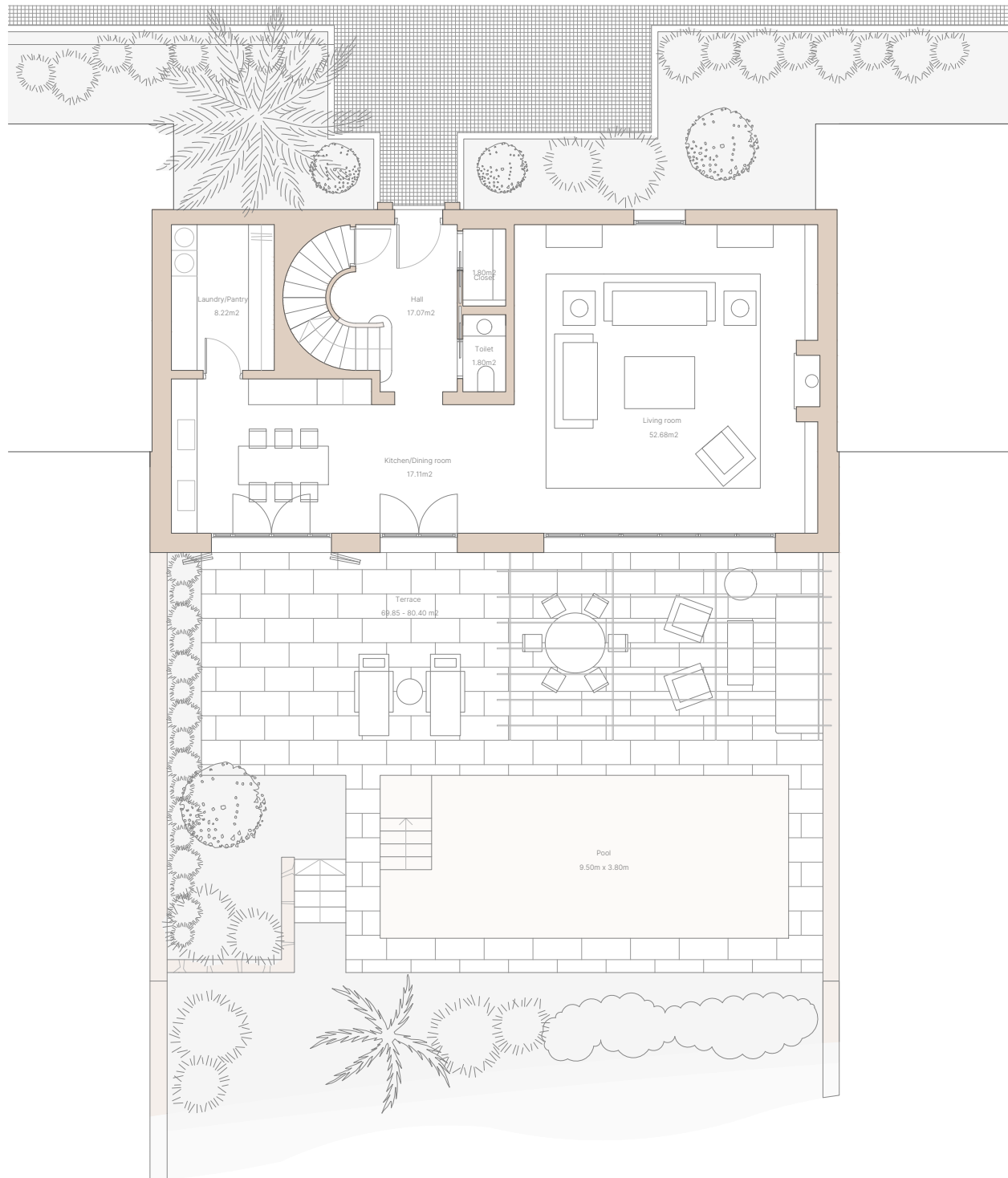
2 PLAZAS DE APARCAMIENTO Y TRASTERO

CASA PUEBLO 2
GROUND FLOOR

3 BEDROOMS - 3,5 BATHROOMS

FIRST FLOOR AREA:	119.34 m ²
GROUND FLOOR AREA:	125.34 m ²
BASEMENT FLOOR AREA:	120.79 m ²
TOTAL AREA:	365.47 m²
TERRACE	67.00 - 124.00 m ²
POOL + GARDEN AREA:	72.00 - 335.00 m ²
PLOT AREA:	267.56 - 558.13 m ²

2 PARKING SPACES AND STORAGE ROOM





CASA PUEBLO 2
PLANTA ALTA Y SÓTANO

3 DORMITORIOS - 3,5 BAÑOS

SUP. PLANTA ALTA	119.34 m ²
SUP. PLANTA BAJA	125.34 m ²
SUP. PLANTA SÓTANO	120.79 m ²
TOTAL SUP. VIVIENDA:	365.47 m²
SUP. TERRAZA	67.00 - 124.00 m ²
SUP. PISCINA + JARDÍN	72.00 - 335.00 m ²
SUP. PARCELA	267.56 - 558.13 m ²

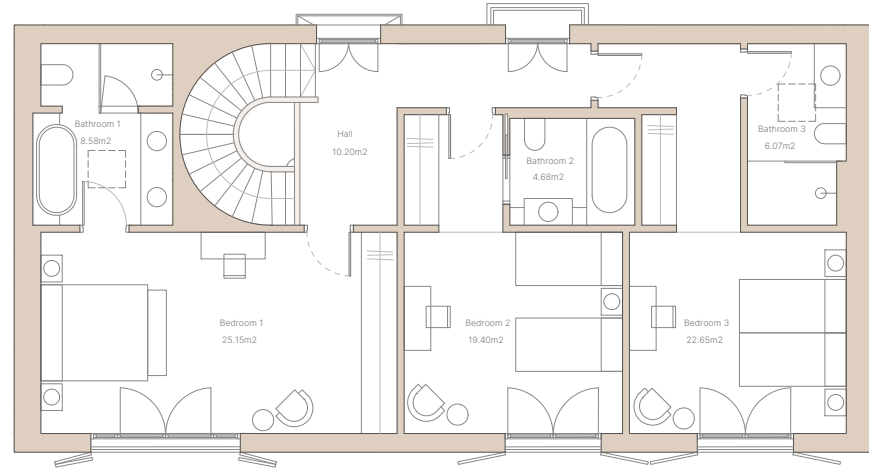
2 PLAZAS DE APARCAMIENTO Y TRASTERO

CASA PUEBLO 2
FIRST FLOOR AND BASEMENT

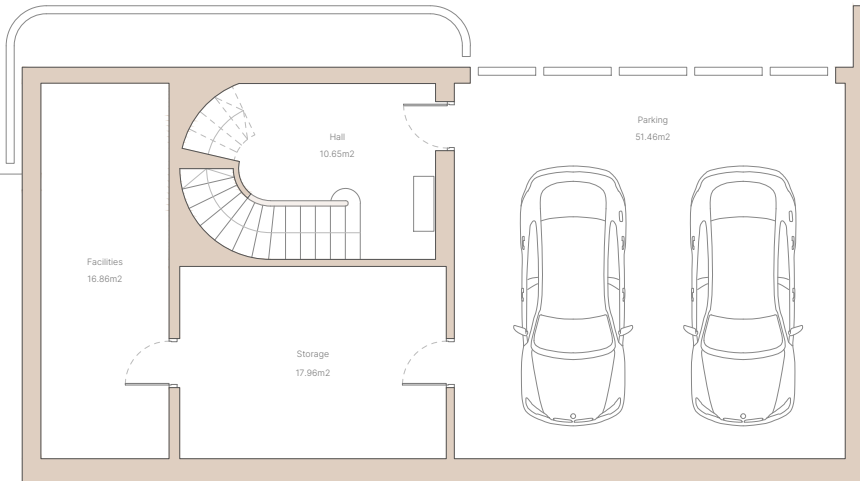
3 BEDROOMS - 3,5 BATHROOMS

FIRST FLOOR AREA:	119.34 m ²
GROUND FLOOR AREA:	125.34 m ²
BASEMENT FLOOR AREA:	120.79 m ²
TOTAL AREA:	365.47 m²
TERRACE	67.00 - 124.00 m ²
POOL + GARDEN AREA:	72.00 - 335.00 m ²
PLOT AREA:	267.56 - 558.13 m ²

2 PARKING SPACES AND STORAGE ROOM



PLANTA ALTA
FIRST FLOOR



PLANTA SÓTANO
BASEMENT