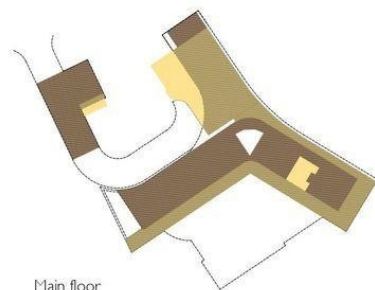
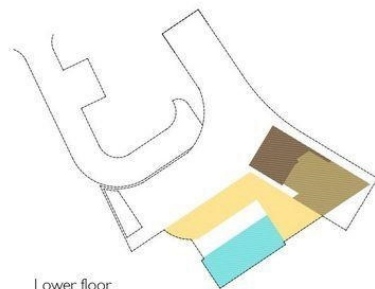


Entrance floor



Main floor



Lower floor

FLOOR SURFACE: HOUSE	
Entrance floor	74,08 m <sup>2</sup>
Main floor	328,20 m <sup>2</sup>
Lower floor	47,65 m <sup>2</sup>
TOTAL	449,93 m <sup>2</sup>

FLOOR SURFACE: COVERED TERRACES	
Entrance floor	0,00 m <sup>2</sup>
Main floor	241,02 m <sup>2</sup>
Lower floor	75,66 m <sup>2</sup>
TOTAL	316,68 m <sup>2</sup>

FLOOR SURFACE: UNCOVERED TERRACES	
Entrance floor	0,00 m <sup>2</sup>
Main floor	60,74 m <sup>2</sup>
Lower floor	109,83 m <sup>2</sup>
TOTAL	170,57 m <sup>2</sup>

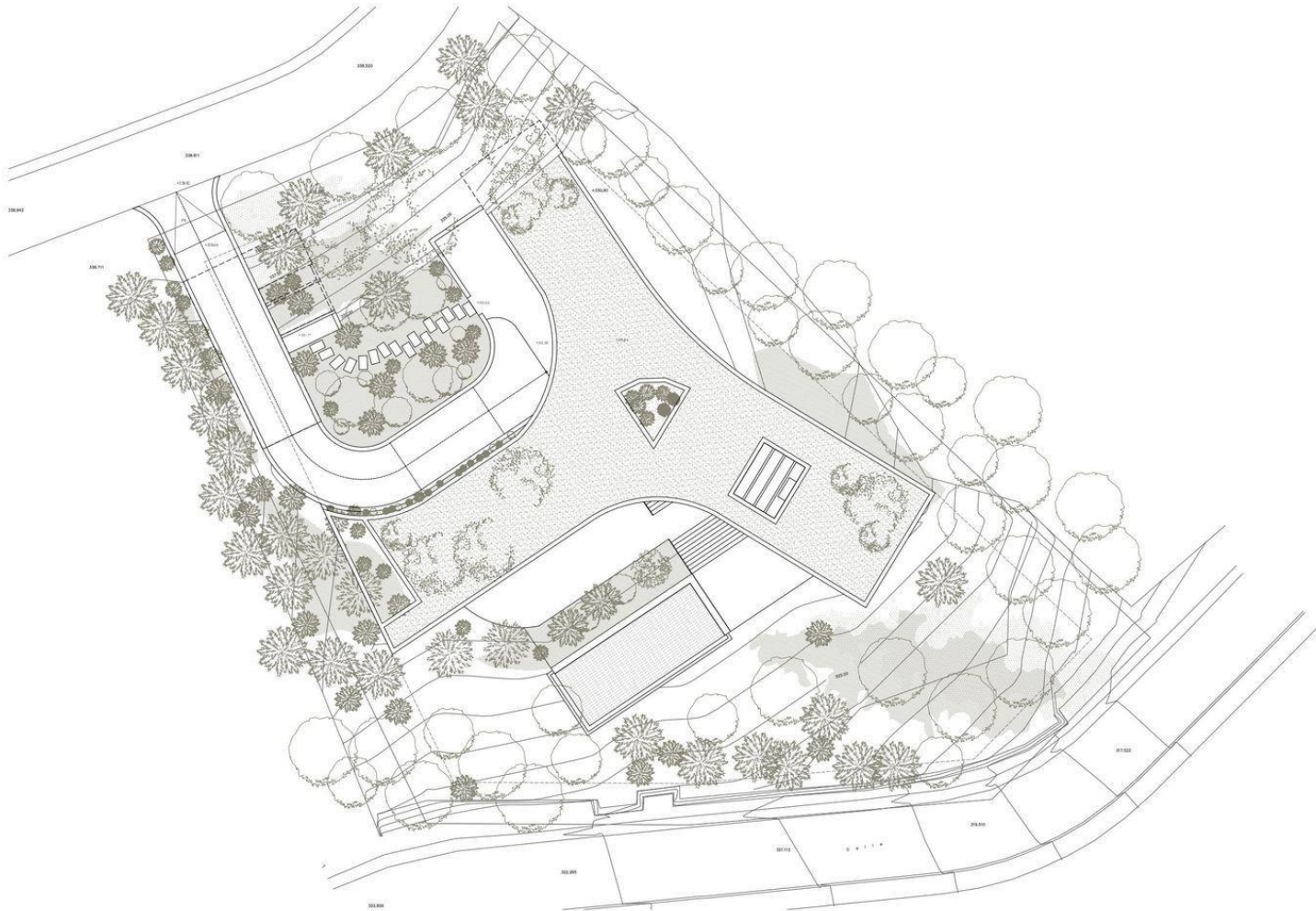
POOL SURFACE	
Lower floor	69,76 m <sup>2</sup>
TOTAL	69,76 m <sup>2</sup>

TOTAL FLOOR SURFACE	1.006,94 m <sup>2</sup>
TOTAL PLOT SIZE	2.345 m <sup>2</sup>

Floor plans, areas and room dimensions are indicative only and subject to change, construction variances and tolerances. In line with our policy of continuous improvement we reserve the right to alter the layout, building style landscaping and specifications at any time without notice.



VITAE  
VILLAS

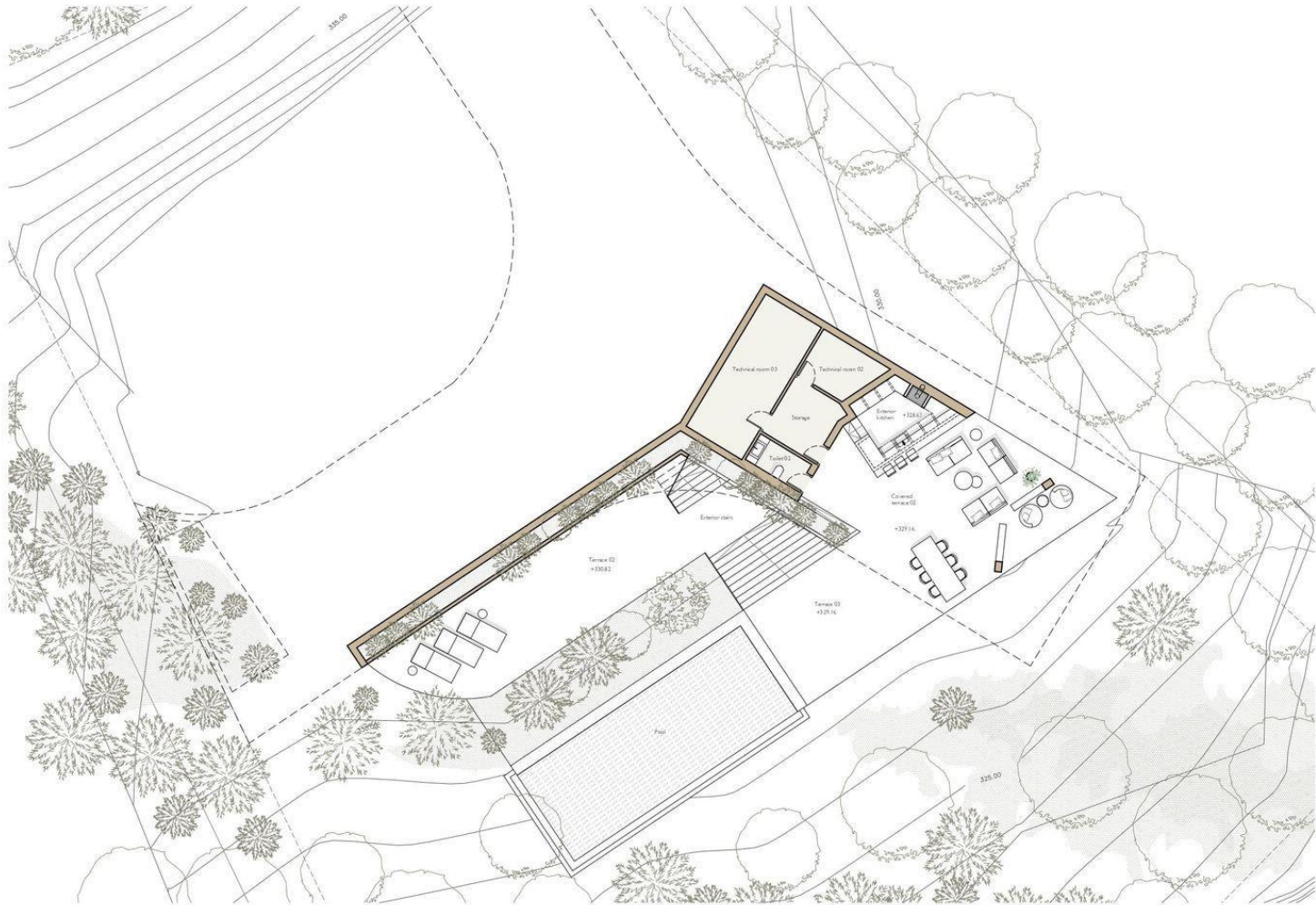


Floor plans, areas and room dimensions are indicative only and subject to change, construction variances and tolerances. In line with our policy of continuous improvement we reserve the right to alter the layout, building style landscaping and specifications at any time without notice.

VILLA F28  
MONTE MAYOR, BENAHAVÍS  
PLOT PLAN







Floor plans, areas and room dimensions are indicative only and subject to change, construction variances and tolerances. In line with our policy of continuous improvement we reserve the right to alter the layout, building style landscaping and specifications at any time without notice.



VILLA F28  
MONTE MAYOR, BENAHAVÍS  
LOWER FLOOR



