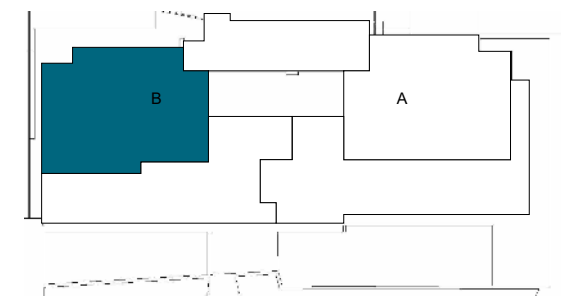
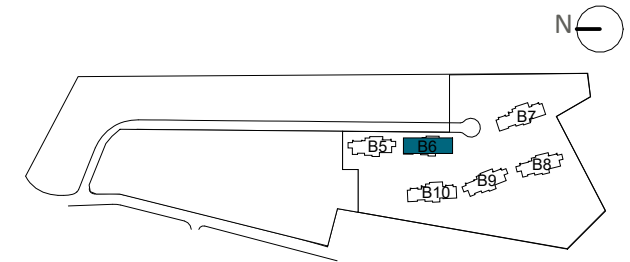


LOCATION



BLOCK 6

APPROXIMATE AREAS

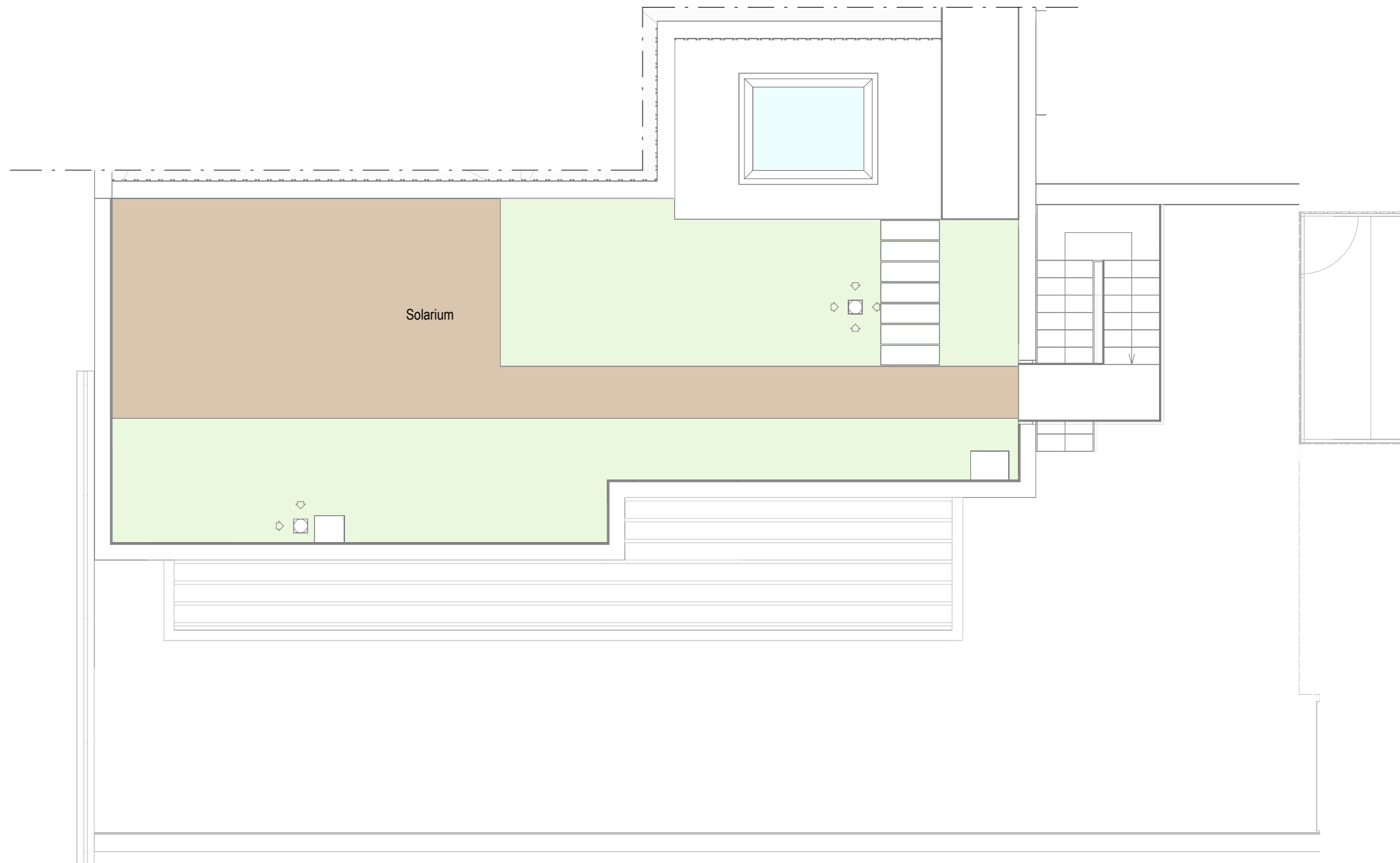
Entrance	4,20 m ²
Living room - Kitchen	42,82 m ²
Hall	2,92 m ²
Master bedroom	17,10 m ²
Master bathroom	6,74 m ²
Bedroom 2	12,49 m ²
Bedroom 3	12,64 m ²
Bathroom 2	4,85 m ²
INTERNAL USEFUL FLOOR AREA	103,76 m²

INTERNAL BUILT AREA	122,56 m²
P.P. COMMON AREAS	35,92 m²
INTERNAL BUILT AREA INCLUDING PP. COMMON AREAS	158,48 m²

EXTERNAL AREAS	
Uncovered laundry room	5,01 m ²
Terrace pergola	17,72 m ²
Uncovered terrace	76,16 m ²
EXTERNAL USEFUL FLOOR AREA	98,89 m²

USEFUL FLOOR AREA SOLARIUM	67,90 m²
-----------------------------------	----------------------------

REGARDING DECRETO BOJA 218/2005	
TOTAL USEFUL FLOOR AREA	114,14 m²
TOTAL BUILT AREA	168,86 m²



Penthouse 62B



The information contained may be modified during the course of the work execution due to technical or legal requirements, without implying any reduction in the overall level of qualities. The access steps to the dwelling and exits to courtyards may be altered according to the level of the streets and it is up to the D.F. to set the criteria.
The pool represented in the commercial plan of the solarium floor, and infographics, is not included in the project, nor in the sale price. It is an option for buyers, the cost of which will be added to the purchase price.